

WINSTED TOWNSHIP

Each township has six files containing six sections in each, and one file containing all 36 sections.

Winsted01to06.pdf
Winsted07to12.pdf
Winsted13to18.pdf
Winsted19to24.pdf
Winsted25to30.pdf
Winsted31to36.pdf
WinstedAll36.pdf

The points are listed starting with the point above the SE corner and continuing in a counter-clockwise rotation around the section. This normally begins with the East point, Northeast, then North, but may also include Witness Corners, and/or Meander Corners.

Definitions

Witness Corner: A witness corner “stands in” when the true corner cannot be monumented or occupied because of difficult terrain or obstruction of the corner sight. The witness corner must be on the section line and is usually 5 or 10 chains away from the true corner.

Meander Corner: The intersection of a township, range, or section line and the banks of a navigable stream or meandering body of water.

MEANDER CORNER NO. 3

corner, Section 13, Township 117 North, Range 27 West

Certificate of Location of Government Corner

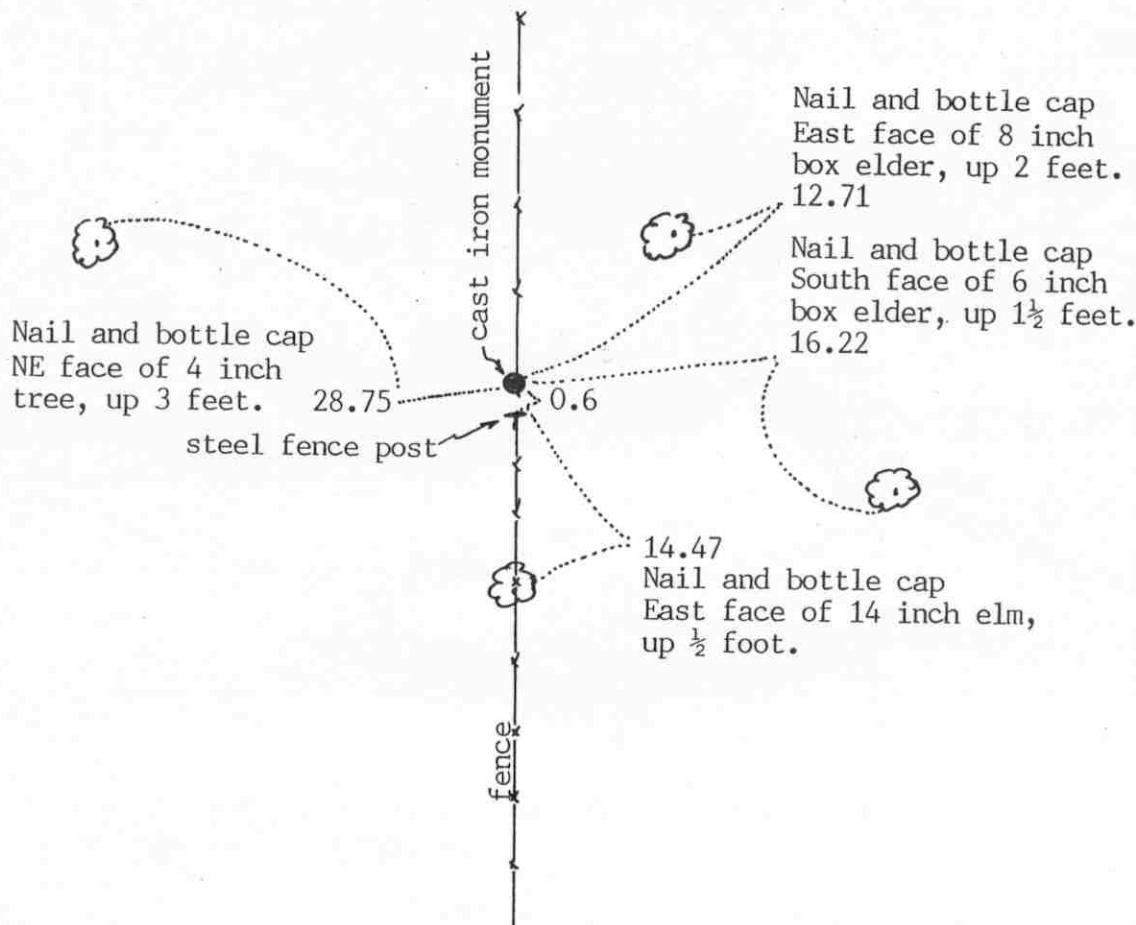
SKETCH OF REFERENCE TIES

(NO SCALE)

CAMPBELL LAKE

SECTION 13, T. 117, R. 27

SECTION 18, T. 117, R. 26



Statement of evidence relative to this corner location on sheet 2

I hereby certify that this document was prepared by me or under my direct supervision.

Willard Pellinen

Willard Pellinen
McLeod County Surveyor
License No. 9626

Date Feb. 8, 1994

OFFICE OF THE COUNTY RECORDER
MCLEOD COUNTY, MINNESOTA.

I hereby certify that this document was filed in this office at 9 o'clock A.M. on the 28th day of March, 1994.

Carmen Estelle Mulder, County Recorder

By _____, Deputy

Document No. 258545

M. C. NO. 3 corner, Section 13, Township 117 North, Range 27 West

Certificate of Location of Government Corner

Meander corner, south of Campbell Lake, east line of Section 13, north of the southeast corner of Section 13.

1855. John Ryan of the General Land Office established this corner. He set a post and marked 2 10 inch trees for bearing trees.

October 14, 1971. McCombs Knutson Associates (Dickman Knutson, county surveyor) dug at the approximate location of the meander corner using government distance from the southeast corner of Section 13. They found a small stone, 5 inches in diameter, down $1\frac{1}{2}$ feet, and below this stone they found another stone, 5 inches in diameter. Below the second stone, they found a third stone, oval, 12 inches long, with sharp point up, and a rotted wood stake beside this last stone. Knutson measured 771.25 feet to the southeast corner of Section 13, compared with the government distance of 772.20 feet. Measured 1078.2 feet to the meander corner north of the lake, compared with the government distance (set by triangulation) of 1071.18 feet.

October 21, 1971. Knutson set a McLeod County cast iron monument and took available ties.

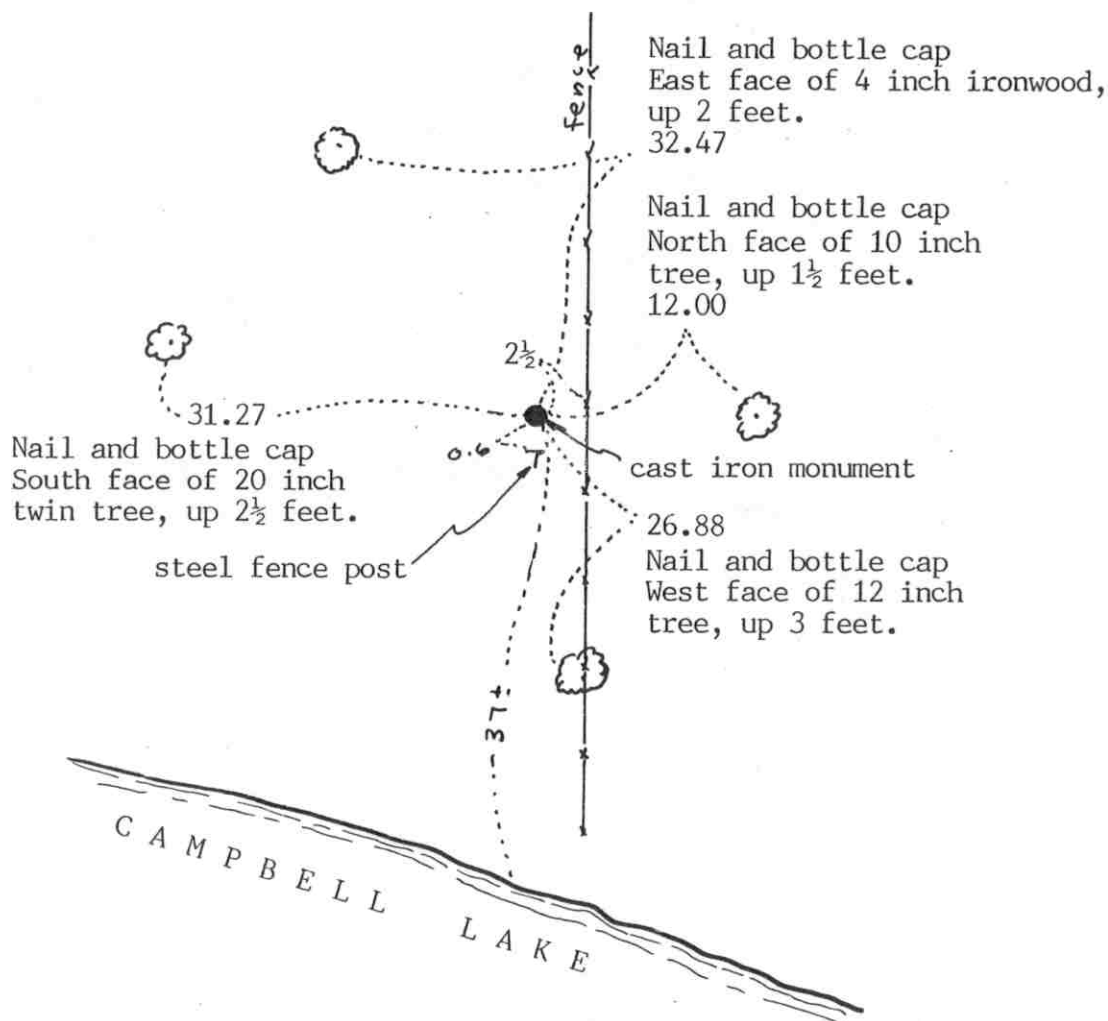
January 13, 1994. We found no ties remaining. We found the monument in good condition and took new available reference ties.

corner, Section 13, Township 117 North, Range 27 West

Certificate of Location of Government Corner

SKETCH OF REFERENCE TIES

(NO SCALE)



SECTION 13, T. 117, R. 27

SECTION 18, T. 117, R. 26

Statement of evidence relative to this corner location on sheet 2

I hereby certify that this document
was prepared by me or under my
direct supervision.

Willard Pellines

Willard Pellinen
McLeod County Surveyor
License No. 9626

Date Feb. 9, 1994.

OFFICE OF THE COUNTY RECORDER
MCLEOD COUNTY, MINNESOTA.

I hereby certify that this document was filed in this office at 9 o'clock A.M. on the 28th day of March, 1994.

Armen Oskanian, County Recorder

By _____, Deputy

Document No. 258546

M.C. NO. 4 corner, Section 13, Township 117 North, Range 27 West*Certificate of Location of Government Corner*

Meander corner No. 4, east line of Section 13, north of Campbell Lake, south of east quarter corner.

1855. John Ryan of the General Land Office established this corner. He set a post and marked a 10 inch oak and an 8 inch ironwood for bearing trees. His notes show a 16 inch elm on line, 17.16 feet north of the meander corner.

October 13, 1971. Dickman Knutson, McLeod County Surveyor, located what he believed to be the original government meander corner. Knutson dug 17 feet south of a large elm tree north of Campbell Lake and found the remains of a wood stake with stones around the stake, down $2\frac{1}{2}$ feet below the surface of the ground. Knutson measured 797.29 feet to the east quarter corner compared with the government distance of 796.62 feet; Knutson measured 1078.2 feet to a found meander corner south of Campbell Lake, compared with a government distance of 1071.18 feet (triangulated distance by the government) Knutson took available ties.

October 20, 1971. Knutson set a McLeod County cast iron monument at the corner.

January 13, 1994. We found the monument in good condition and took new reference ties. All old ties had been destroyed.

EAST QUARTER corner, Section 13, Township 117 North, Range 27 West

Certificate of Location of Government Corner

SKETCH OF REFERENCE TIES
(NO SCALE)

SECTION 13, T. 117, R. 27

SECTION 18, T. 117, R. 26.

Nail and bottle cap
W'ly face of 4 inch
elm, up 1 foot.

5.50

Nail and bottle cap
East face of 8 inch
triple box elder,
up 1 foot. 4.74

Nail and bottle cap
South face of 6 inch
twin box elder, up 1 foot.
2.40

cast iron monument
0.50
Steel fence post

field line

field line

Field line 6 feet north and
field line 6 feet south of
corner.

Statement of evidence relative to this corner location on sheet 2

I hereby certify that this document
was prepared by me or under my
direct supervision.

Willard Pellinen

Willard Pellinen
McLeod County Surveyor
License No. 9626

Date Feb. 9, 1994

OFFICE OF THE COUNTY RECORDER
MCLEOD COUNTY, MINNESOTA.

I hereby certify that this document was filed in this
office at 9 o'clock A.M. on the 28th day
of March, 1994.

Charmen Otis Melder, County Recorder

By _____, Deputy

Document No. 258544

EAST QUARTER corner, Section 13, Township 117 North, Range 27 West

Certificate of Location of Government Corner

1856. John Ryan of the General Land Office established this corner. He set a post and marked a 10 inch elm and a 30 inch oak for bearing trees.

October 20, 1971. McCombs Knutson Associates (Dickman Knutson, county surveyor) set a cast iron monument using single proportionate measure between the northeast corner of Section 13 and Meander Corner No. 4, north of Campbell Lake. Knutson measured 797.29 feet to the meander corner compared with a distance of 796.62 by the government in 1855. Knutson measured 2642.21 feet to the northeast corner compared with the government distance of 2640 feet; The corner fell on a field to the east and 7 feet east of the north-south field line. Adjacent land owners agree this is the correct location of the corner.

January 14, 1994. We found no ties remaining to the monument. We found the monument in good condition down 4 inches below the surface and took new available reference ties.

The field line to the east is now 6 feet north of the corner.

NORTHEAST corner, Section 13, Township 117 North, Range 27 West

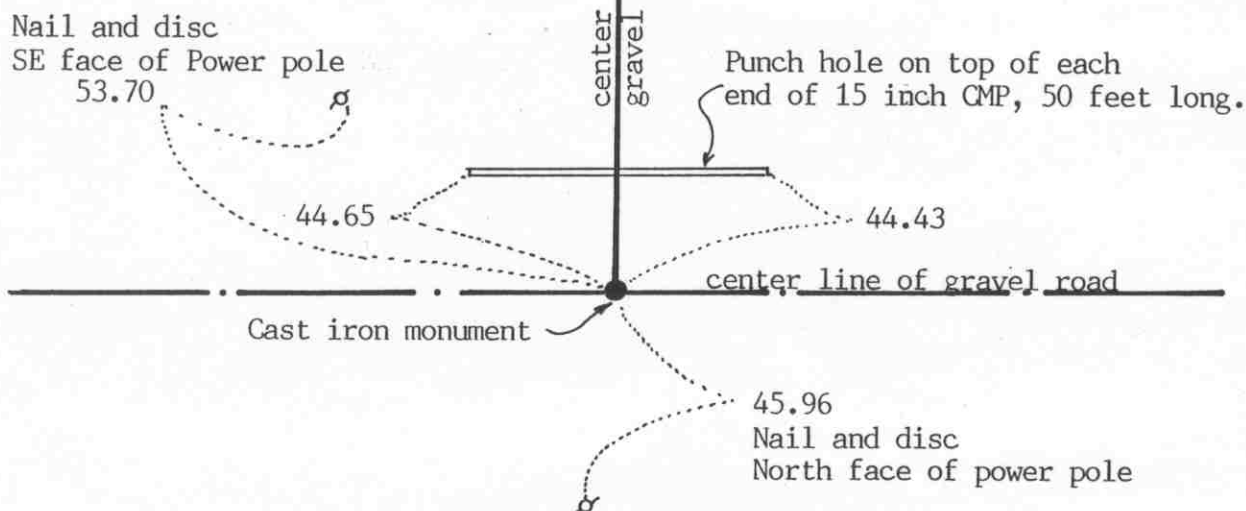
Certificate of Location of Government Corner

SKETCH OF REFERENCE TIES

(NO SCALE)

SECTION 12, T. 117, R. 27

SECTION 7, T. 117, R. 26



SECTION 13, T. 117, R. 27

SECTION 18, T. 117, R. 26

Statement of evidence relative to this corner location on sheet 2

I hereby certify that this document was prepared by me or under my direct supervision.

Willard Pellinen

Willard Pellinen
McLeod County Surveyor
License No. 9626

Date July 22, 1993

OFFICE OF THE COUNTY RECORDER MCLEOD COUNTY, MINNESOTA.

I hereby certify that this document was filed in this office at 4 o'clock P. M. on the 27th day of July, 19 93.

Carmen Estlie Mulder, County Recorder

By _____, Deputy

Document No. 253806

NORTHEAST corner, Section 13, Township 117 North, Range 27 West

Certificate of Location of Government Corner

1855. John Ryan of the General Land Office established this corner. He set a post and marked 2 elms, an ironwood and a linden for bearing trees.

June, 1968. McCombs Knutson Associates (Dickman Knutson, county surveyor) dug for the corner. They found a stone, 15 inches in diameter, sharp point up, at the center line intersection of the roads. Roads north, east and west. Adjoining property owners agreed on this location. Knutson set a McLeod County cast iron monument in place of the stone and took available reference ties.

The monument set by Knutson is accepted as marking the location of the section corner. It fits occupation lines, the center lines of the roads, and it perpetuates the location of an old monument, the stone.

March 31, 1993. We found the monument in good condition down 4 inches below the road surface and took new reference ties.

NORTH QUARTER corner, Section 13, Township 117 North, Range 27 West

Certificate of Location of Government Corner

SKETCH OF REFERENCE TIES

(NO SCALE)

SECTION 12

Nail and bottle cap
SW face of 12 inch
Twin oak, up 4 feet
65.97

Nail and bottle cap
SE face of 6 inch popple
Up 5 feet.
71.97

West edge of
sign post
36.70

Nail and bottle cap
East face of power pole
54.44

center line of bituminous road

Cast iron monument

6

center line of gravel road

SECTION 13

Statement of evidence relative to this corner location on sheet 2

I hereby certify that this document
was prepared by me or under my
direct supervision.

Willard Pellinen

Willard Pellinen
McLeod County Surveyor
License No. 9626

Date July 22, 1993

OFFICE OF THE COUNTY RECORDER
MCLEOD COUNTY, MINNESOTA.

I hereby certify that this document was filed in this
office at 4 o'clock P.M. on the 27th day
of July, 19 93.

Carmen Estelle Mulder, County Recorder

By _____, Deputy

Document No. 253807

NORTH QUARTER corner, Section 13, Township 117 North, Range 27 West

Certificate of Location of Government Corner

1856. E.N.Darling of the General Land Office established this corner. He set a post and marked an elm and a hickory for bearing trees.

January, 1968. McCombs Knutson Associates (Dickman Knutson, county surveyor, dug for the corner and found an iron pin down 2 feet below the surface of the road.

August, 1971. Knutson set a McLeod County cast iron monument and took reference ties.

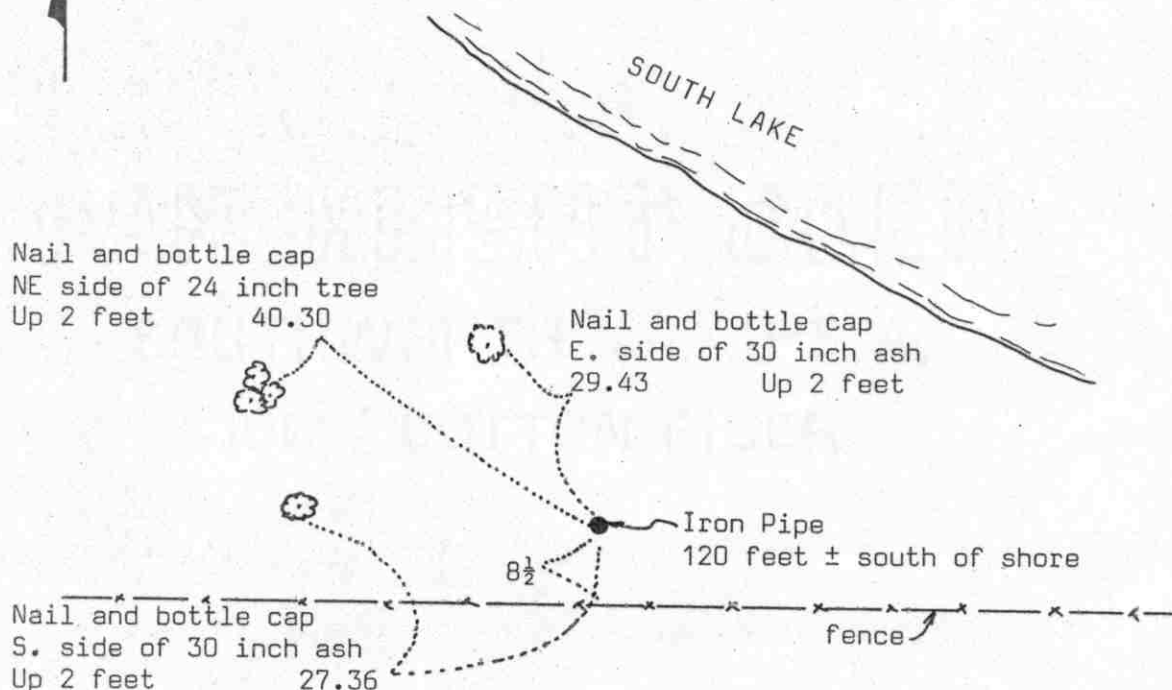
March 31, 1993. We found the monument in good condition down 6 inches below the road surface and took new reference ties.

Certificate of Location of Government Corner



SKETCH OF REFERENCE TIES

(NO SCALE)

Statement of evidence relative to this corner location on sheet 2

I hereby certify that this document
was prepared by me or under my
direct supervision.

Willard Pellinen

Willard Pellinen
McLeod County Surveyor
License No. 9626

Date 3/31/89

OFFICE OF THE COUNTY RECORDER
MCLEOD COUNTY, MINNESOTA.

I hereby certify that this document was filed in this
office at 3 o'clock P.M. on the 64 day
of April, 19 89.

Carmen Dettie, County Recorder

By _____, Deputy

Document No. 227612

MEANDER CORNER NO.5 corner, Section 14, Township 117 North, Range 27 West

Certificate of Location of Government Corner

This corner was set in 1856 by E. N. Darling of the Government Land Office. He set a post and had reference ties to 2 bearing trees.

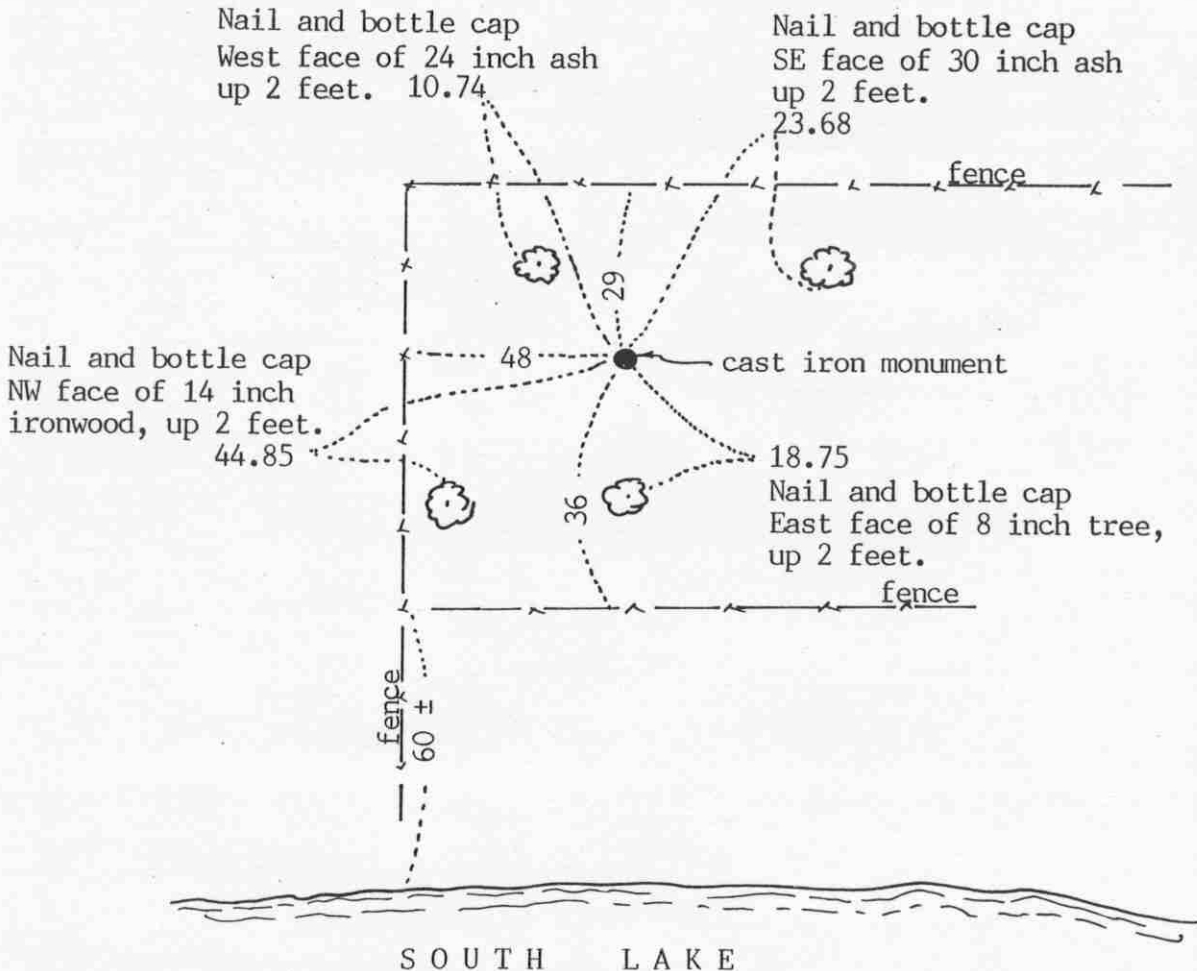
On January 10, 1989, we set the meander corner on line between the southeast and northeast corners of Section 14 on a proration of the government distances.

Government distance between the section corners was 80 chains (5280.00 feet). We measured 5278.51 feet. The government distance from the southeast corner to the meander corner was 19.90 chains (1313.40 feet) Our prorated distance is 1313.03 feet.

NORTHEAST corner, Section 14, Township 117 North, Range 27 West

Certificate of Location of Government Corner

SKETCH OF REFERENCE TIES (NO SCALE)



Statement of evidence relative to this corner location on sheet 2

I hereby certify that this document was prepared by me or under my direct supervision.

Willard Pellinen

Willard Pellinen
McLeod County Surveyor
License No. 9626

Date April 11, 1994

OFFICE OF THE COUNTY RECORDER
MCLEOD COUNTY, MINNESOTA.

I hereby certify that this document was filed in this office at 9 o'clock A.M. on the 20th day of April, 1994.

Carmen (Belie) Mulder, County Recorder

By _____, Deputy

Document No. 259052

NORTHEAST corner, Section 14, Township 117 North, Range 27 West

Certificate of Location of Government Corner

1856. E.N.Darling of the General Land Office establsished this corner. He set a post and marked 2 oaks and 2 lindens for bearing trees.

1920 survey notes show the corner to be at the fence corner.

1924 notes show the corner 55 feet south of the fence corner.

January, 1968. McCombs Knutson Associates (Dickman Knutson, county surveyor) found a stone with a rotted wood stake below the stone (original corner ?) This was about 30 feet south and 50 feet east of the fence corner. Knutson had a distance of approximately 5266 feet to the northeast corner of Section 14, 5272 \pm feet to the northeast corner of Section 13, 5278 \pm feet to the southeast corner of Section 14 and 5266 \pm feet to the northeast corner of Section 11.

Knutson set a McLeod County cast iron monument and took available ties.

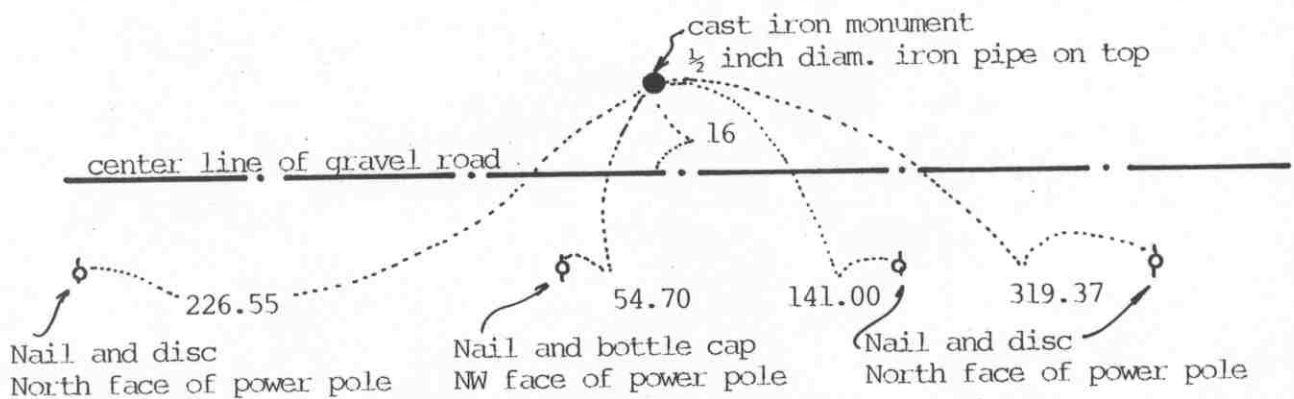
January 21, 1994. We found the monument in good condition and took new reference ties.

NORTH QUARTER corner, Section 14, Township 117 North, Range 27 West

Certificate of Location of Government Corner

SKETCH OF REFERENCE TIES (NO SCALE)

SECTION 11



SECTION 14

Statement of evidence relative to this corner location on sheet 2

I hereby certify that this document was prepared by me or under my direct supervision.

Willard Pellinen

Willard Pellinen
McLeod County Surveyor
License No. 9626

Date Oct. 17, 1992

OFFICE OF THE COUNTY RECORDER MCLEOD COUNTY, MINNESOTA.

I hereby certify that this document was filed in this office at 9 o'clock A.M. on the 26th day of Oct, 1992.

Carmen St. Lieke, County Recorder

By _____, Deputy

Document No. 248487

NORTH QUARTER corner, Section 14, Township 117 North, Range 27 West***Certificate of Location of Government Corner***

1856. E. N. Darling of the General Land Office established this corner and set a post and marked an oak and an elm for bearing trees.

March 16, 1971. Mr. Edmund Wegshied, who lived in the Northeast Quarter of Section 14, said the corner is on the north side of the east-west road.

April 6, 1973. McCombs Knutson Associates (Dickman Knutson, county surveyor) found a stone, 8 inches by 10 inches by 5 inches and a rotted wood stake down 1 foot below the surface. Knutson set a McLeod County cast iron monument and took reference ties. This corner is approximately on a split between the section corners and on the easterly extension of a fence along the north line of the Northwest Quarter of the Northwest Quarter.

April 16, 1992. We found the monument in good condition and checked the reference ties.

EAST QUARTER corner, Section 15, Township 117 North, Range 27 West

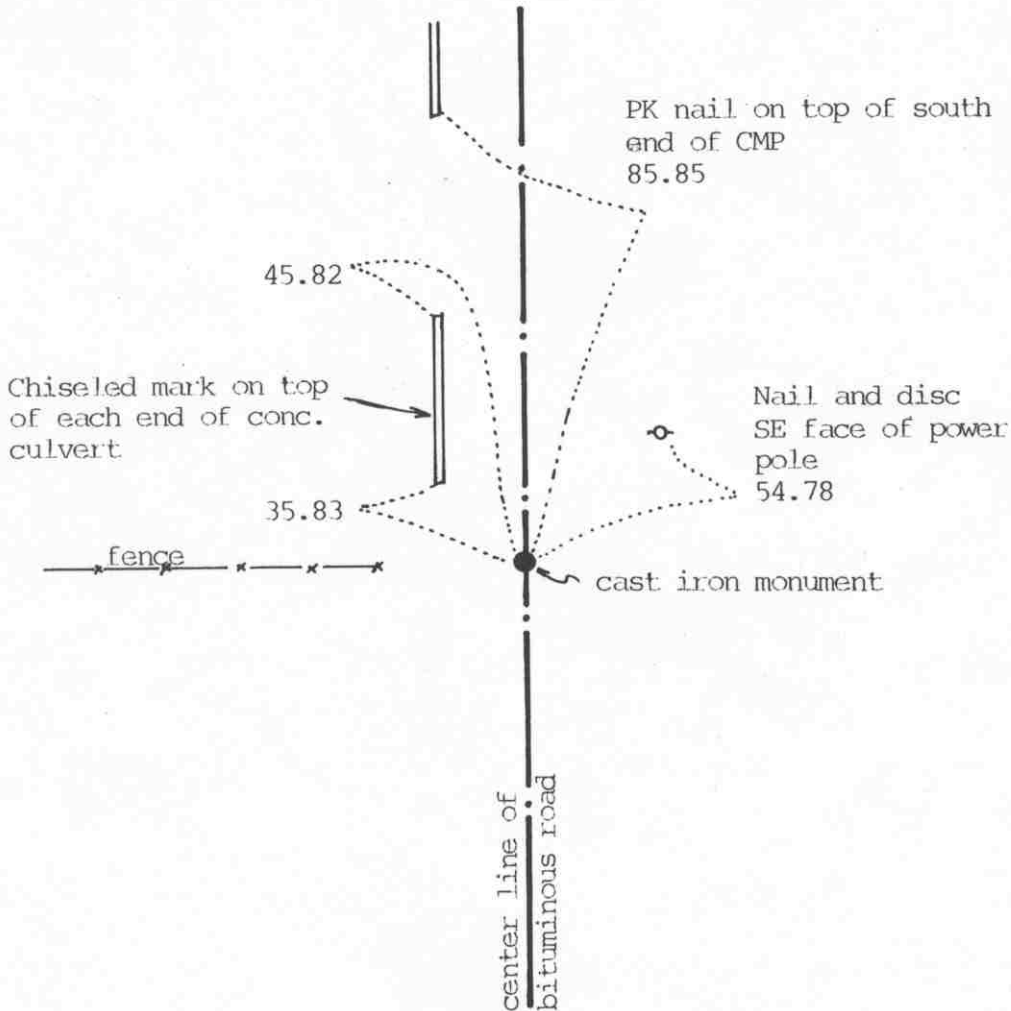
Certificate of Location of Government Corner

SKETCH OF REFERENCE TIES (NO SCALE)



SECTION 15

SECTION 14



Statement of evidence relative to this corner location on sheet 2

I hereby certify that this document was prepared by me or under my direct supervision.

Willard Pellinen

Willard Pellinen
McLeod County Surveyor
License No. 9626

Date Oct. 17, 1992

OFFICE OF THE COUNTY RECORDER
MCLEOD COUNTY, MINNESOTA.

I hereby certify that this document was filed in this office at 9 o'clock A. M. on the 26th day of Oct, 1992.

Carmen St. Lie Mulder, County Recorder

By _____, Deputy

Document No. 248489

EAST QUARTER corner, Section 15, Township 117 North, Range 27 West

Certificate of Location of Government Corner

1856. E. N. Darling of the General Land Office established this corner. He set a post and marked an ash and an aspen for bearing trees.

Old highway field notes show this corner to be on the center line of the north-south road on the easterly extension of a fence to the west.

March 16, 1971. Walter Marks, 56 years old and had lived in the Southeast Quarter of Section 15 all his life, said corner is the center line of the road on the easterly extension of the fence.

October 22, 1973. McCombs Knutson Associates (Dickman Knutson, county surveyor) set a railroad spike on the center line in line with the fence to the west and took available ties.

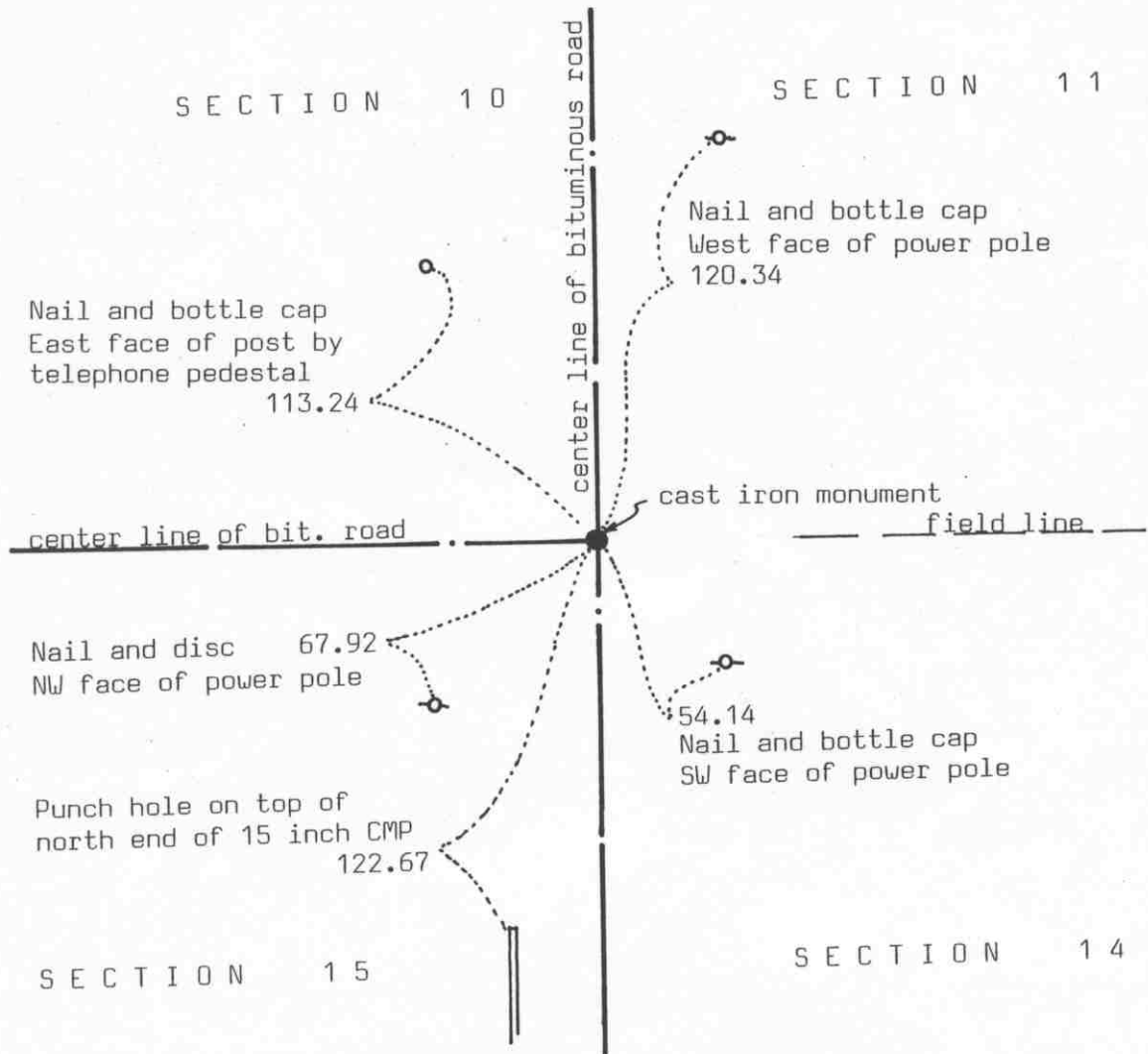
July 16, 1979. We replaced the railroad spike with a McLeod County cast iron monument and took new ties.

April 16, 1992. We found the monument in good condition and checked the reference ties.

There being no evidence to the contrary, we accept the monument we set as marking the quarter corner. It fits occupation lines, the center line of the road and the fence to the west.

NORTHEAST corner, Section 15, Township 117 North, Range 27 West

Certificate of Location of Government Corner

SKETCH OF REFERENCE TIES
(NO SCALE)

Statement of evidence relative to this corner location on sheet 2

I hereby certify that this document was prepared by me or under my direct supervision.

Willard Pellinen

Willard Pellinen
McLeod County Surveyor
License No. 9626

Date Oct. 9, 1992

OFFICE OF THE COUNTY RECORDER
MCLEOD COUNTY, MINNESOTA.

I hereby certify that this document was filed in this office at 9 o'clock A.M. on the 26th day of Oct, 1992.

Armen Belie Mulder, County Recorder

By _____, Deputy

Document No. 248488

NORTHEAST corner, Section 15, Township 117 North, Range 27 West***Certificate of Location of Government Corner***

1856. This corner was originally established by E. N. Darling of the General Land Office. He set a post and marked 3 elms and a linden for bearing trees.

November 20, 1968. McCombs Knutson Associates (Dickman Knutson, county surveyor) found an iron pin at the center line intersection of the roads. State Highway No. 261 right of way map shows the corner to be on the center line intersection.

July 16, 1979. We replaced the iron pin with a McLeod County cast iron monument and took reference ties.

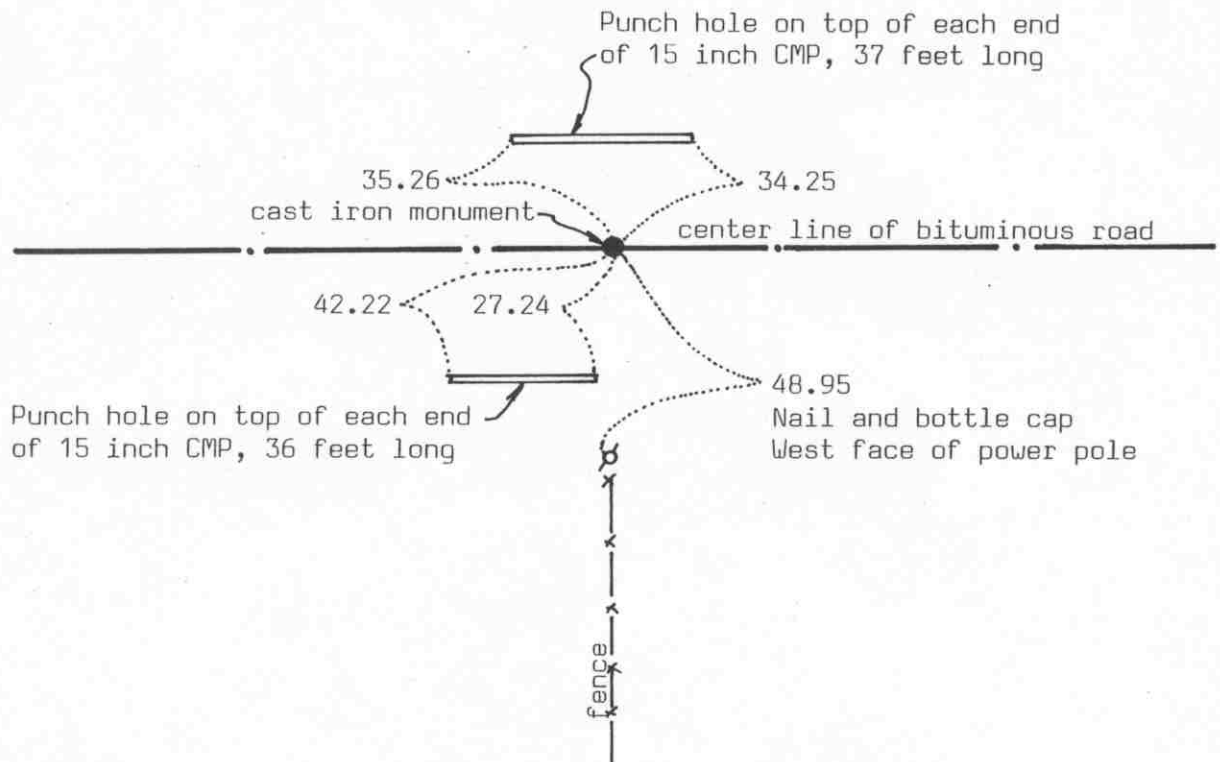
April 16, 1992. We found the monument in good condition and took new reference ties.

NORTH QUARTER corner, Section 15, Township 117 North, Range 27 West

Certificate of Location of Government Corner

SKETCH OF REFERENCE TIES (NO SCALE)

SECTION 10



SECTION 15

Statement of evidence relative to this corner location on sheet 2

I hereby certify that this document
was prepared by me or under my
direct supervision.

Willard Pellinen

Willard Pellinen
McLeod County Surveyor
License No. 9626

Date Oct. 21, 1992

OFFICE OF THE COUNTY RECORDER MCLEOD COUNTY, MINNESOTA.

I hereby certify that this document was filed in this
office at 9 o'clock A.M. on the 26th day
of Oct, 1992.

Carmin Otis Muller, County Recorder

By _____, Deputy

Document No. 248490

NORTH QUARTER corner, Section 15, Township 117 North, Range 27 West

Certificate of Location of Government Corner

1856. E.N.Darling of the General Land Office established this corner. He set a post and marked a 20 inch Linden and a 10 inch elm, for bearing trees.

March 16, 1971. Mr. Frank Fashing, 45 years old, owns land in Sections 10 and 15 along the north south quarter lines, said fence running south is on the quarter line. Farm has been in the family for 65 years.

June 23, 1971. McCombs Knutson Associates (Dickman Knutson, county surveyor) dug for the corner, John Tupa from Hutchinson with a backhoe. Down 4 feet below the road surface they found a stone, sharp point up, part of an old gear on top of the stone and a wood stake beside the stone. They took reference ties.

September 3, 1971. Knutson set a McLeod County cast iron monument at the corner.

This corner falls within 0.3 foot of being on a split between the section corners and 13.3 feet south of a straight line.

April 16, 1992. We found the monument in good condition down 6 inches below the surface of the bituminous road and took new reference ties.

The monument set by Knutson is accepted as marking the quarter corner. It fits occupation lines, the center line of the road and the northerly extension of the fence and it perpetuates the position of an older monument, the stone.

EAST QUARTER corner, Section 16, Township 117 North, Range 27 West

Certificate of Location of Government Corner

SKETCH OF REFERENCE TIES
(NO SCALE)



SECTION 16

Chiseled mark on top
of south end of conc.
culvert 179.60

Nail and bottle cap
SE face of power pole
37.44

Nail and disc
West face of power pole
243.13

center line of gravel road

cast iron monument

center line of gravel road

SECTION 15

Statement of evidence relative to this corner location on sheet 2

I hereby certify that this document
was prepared by me or under my
direct supervision.

Willard Pellinen

Willard Pellinen
Land Surveyor
Minnesota Registration No. 9626

Date October 14, 1992

OFFICE OF THE COUNTY RECORDER
COUNTY, MINNESOTA.

I hereby certify that this document was filed in this
office at 9 o'clock A.M. on the 19th day
of Oct, 1992.

Carmin Estlie Mulder County Recorder

By _____, Deputy

Document No. 248333

EAST QUARTER corner, Section 16, Township 117 North, Range 27 West

Certificate of Location of Government Corner

1856. E.N.Darling of the General Land Office establnished this corner. He set a post and marked an elm and a linden for bearing trees.

December 17, 1971. McCombs Knutson Associates (Dickman Knutson, county surveyor) measured the east line of Section 16 and set a temporary east quarter corner on the center line intersection of the gravel roads.

January 14, 1972. Peter Schermann, 62 years old and had lived in the Northeast Quarter of Section 16 all his life, said there is a stone at the corner at the center line intersection of the roads.

May 10, 1972. Knutson dug for the corner at their temporary corner and down 1 foot below the road surface they found a 16 inch diameter stone, 24 inches long, set on end, and a rotted wood stake beside. Knutson took reference ties and moved the stone to make room for a cast iron monument.

October 31, 1972. Knutson set a McLeod County cast iron monument at the corner and took additional ties.

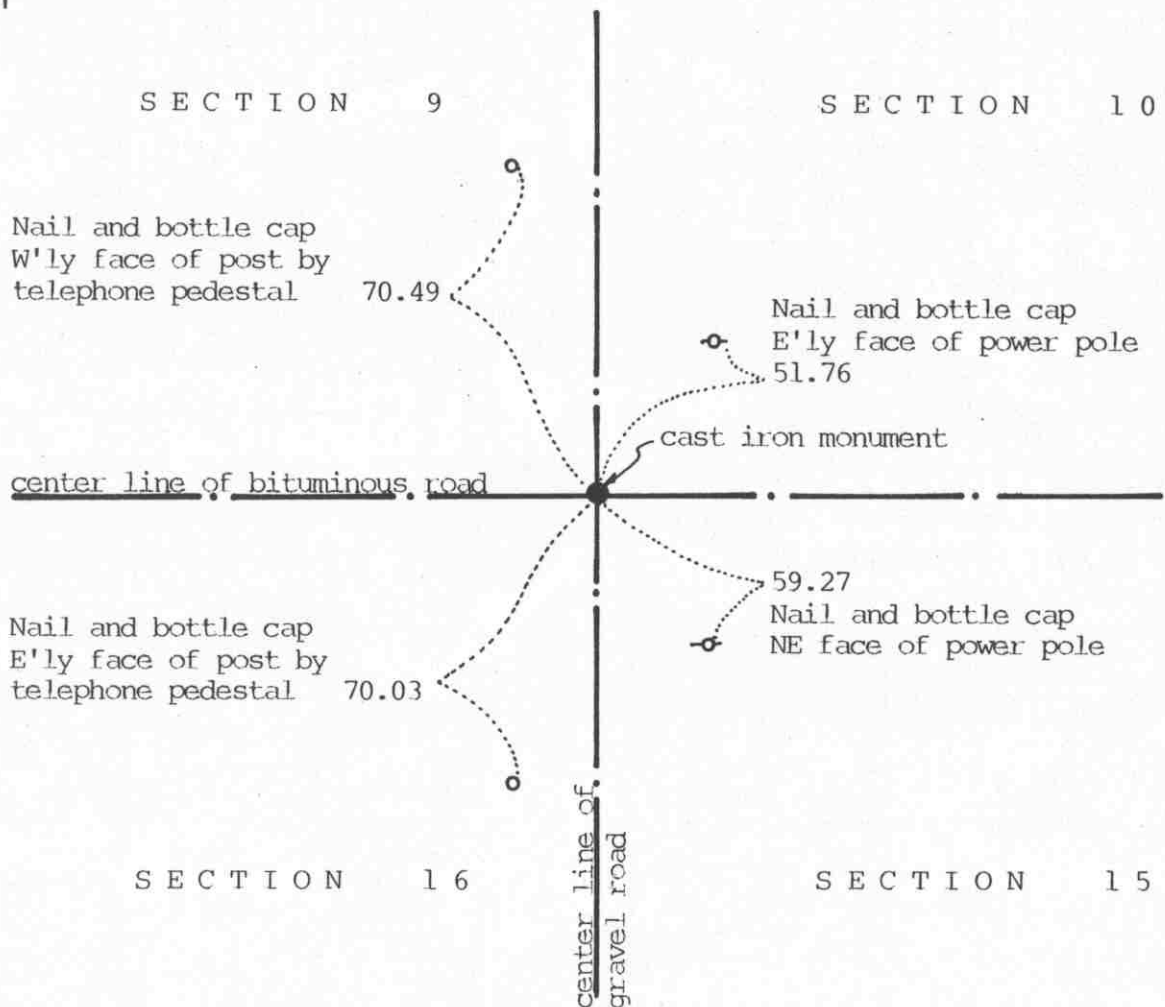
March 6, 1992. We found the monument in good condition down 10 inches below the surface of the gravel road and took new reference ties.

The monument set by Knutson is accepted as marking the government corner. It fits occupation lines, the center lines of the roads, and it perpetuates the position of an older monument, the stone.

NORTHEAST corner, Section 16, Township 117 North, Range 27 West

Certificate of Location of Government Corner

SKETCH OF REFERENCE TIES (NO SCALE)



Statement of evidence relative to this corner location on sheet 2

I hereby certify that this document
was prepared by me or under my
direct supervision.

Willard Pellinen

Willard Pellinen
McLeod County Surveyor
License No. 9626

Date Oct. 18, 1992

OFFICE OF THE COUNTY RECORDER
MCLEOD COUNTY, MINNESOTA.

I hereby certify that this document was filed in this
office at 9 o'clock A.M. on the 26th day
of Oct, 1992.

Armen Petrie Mader, County Recorder

By _____, Deputy

Document No. 248491

NORTHEAST corner, Section 16, Township 117 North, Range 27 West

Certificate of Location of Government Corner

1856. E. N. Darling of the General Land Office established this corner. He set a post, in a marsh, and marked 2 ash trees, 1 elm and 1 oak for bearing trees.

March 16, 1971. Mr. Louis Quast, 64 years old, owned the Southwest Quarter of the Southwest Quarter of Section 10 and had lived in the area all his life, said there is a stone at the center line intersection of the roads, at the section corner.

June 23, 1971. McCombs Knutson Associates (Dickman Knutson, county surveyor) dug for the corner, John Tupa from Hutchinson, with a backhoe. Down 5 feet below the surface of the road they found a small, 5 inch diameter stone with a small stake beside it. They took reference ties and down 7 feet below the surface they found an 8 inch long 2 by 6 wood stake. This was directly below the stone.

September 3, 1971. Knutson set a McLeod County cast iron monument.

April 22, 1985. We found no ties remaining, we found the monument in good condition 4 inches below the bituminous surface. We took new reference ties.

April 16, 1992. We found the monument in good condition and checked the reference ties.

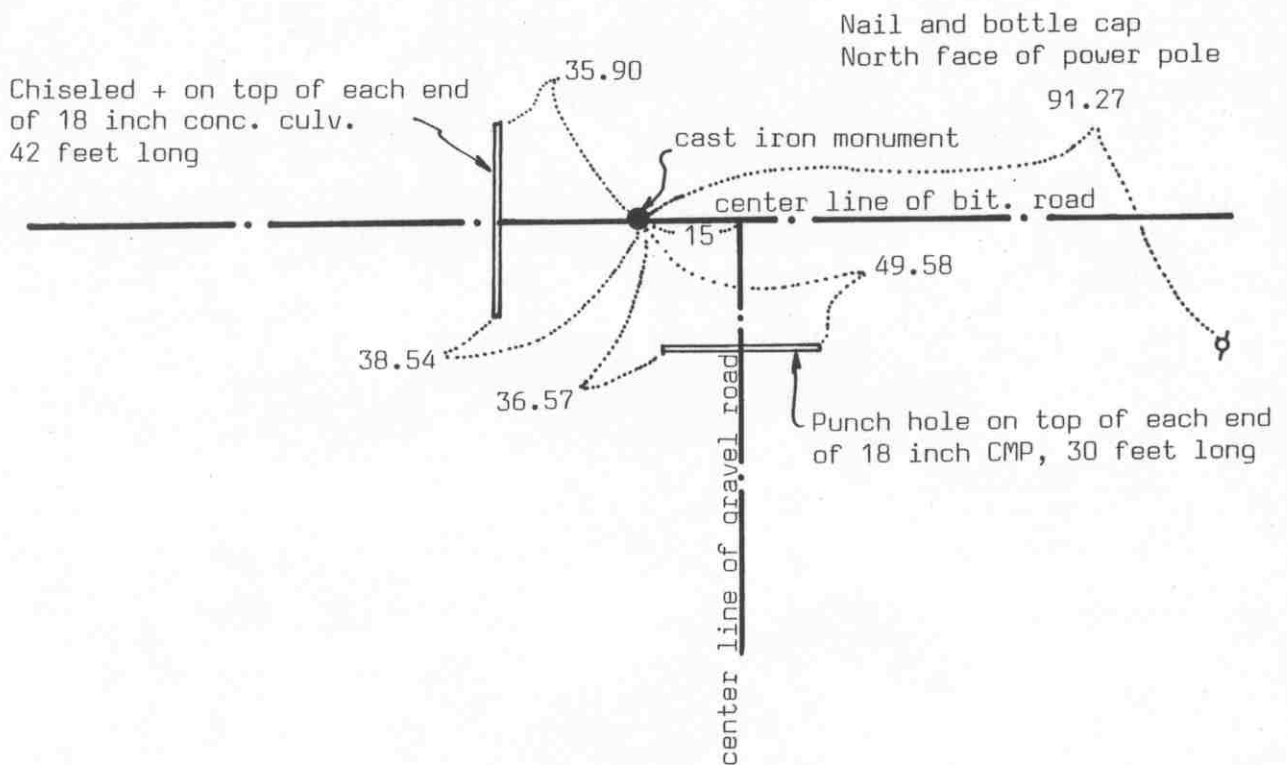
The monument set by Knutson is accepted as marking the correct location of the section corner. It fits occupation lines, the center lines of the roads and it perpetuates the location of older monuments, the stone and wood 2 by 6.

NORTH QUARTER corner, Section 16, Township 117 North, Range 27 West

Certificate of Location of Government Corner

SKETCH OF REFERENCE TIES (NO SCALE)

SECTION 9



SECTION 16

Statement of evidence relative to this corner location on sheet 2

I hereby certify that this document was prepared by me or under my direct supervision.

Willard Pellinen
Willard Pellinen
McLeod County Surveyor
License No. 9626

Date October 22, 1992

OFFICE OF THE COUNTY RECORDER MCLEOD COUNTY, MINNESOTA.

I hereby certify that this document was filed in this office at 9 o'clock A.M. on the 26th day of Oct, 1992.

Carman O'Brien, County Recorder

By _____, Deputy

Document No. 248492

Certificate of Location of Government Corner

1856. This corner was originally established by E. N. Darling of the General Land Office. He set a post and marked an 8 inch ash and a 10 inch aspen for bearing trees.

1898. E. L. Higgins, county surveyor, found no post at the corner, only fence line, fences north and south.

April 27, 1930. Lew Merrill, surveyor, shows an iron monument at the corner.

June 23, 1971. McCombs Knutson Associates (Dickman Knutson, county surveyor) dug for the corner, John Tupa from Hutchinson with a backhoe. Down 2 feet below the road surface they found a stone. They took reference ties and dug deeper. Down 3 feet they found another stone, 10 inch diameter, directly below the first stone. Down 4 feet they found an 8 inch by 8 inch by 12 inch stone, also directly below the first stone. Down $5\frac{1}{2}$ feet they found a 12 inch by 12 inch by 20 inch stone, set on end, also directly below the first stone.

October 1, 1971. Knutson Set a McLeod County cast iron monument at the corner.

April 16, 1992. We found the monument in good condition down 7 inches below the surface and took new reference ties.

The monument set by Knutson is accepted as marking the quarter corner. It fits an occupation line, the center line of the east-west road and it perpetuates the location of older monuments, the stones.

EAST QUARTER corner, Section 17, Township 117 North, Range 27 West

Certificate of Location of Government Corner

SKETCH OF REFERENCE TIES

(NO SCALE)



SECTION 17

Nail and bottle cap on
top of post
U.G. gas line 47.12

center line of gravel drive

cast iron monument

center line of gravel road

31.34

Punch hole on top
of each end of CMP

field line

27.25

34.90

Nail and disc
SW face of power pole

SECTION 16

Statement of evidence relative to this corner location on sheet 2

I hereby certify that this document
was prepared by me or under my
direct supervision.

Willard Pellinen

Willard Pellinen
McLeod County Surveyor
License No. 9626

Date Oct. 4, 1992

OFFICE OF THE COUNTY RECORDER
MCLEOD COUNTY, MINNESOTA.

I hereby certify that this document was filed in this
office at 9 o'clock A.M. on the 7th day
of October, 1992.

Harmon Ostlie, County Recorder

By _____, Deputy

Document No. 248101

EAST QUARTER corner, Section 17, Township 117 North, Range 27 West

Certificate of Location of Government Corner

1856. E. N. Darling of the General Land Office established this corner. He set a post and marked an elm and a maple for bearing trees.

January 14, 1972. James Bayerl who owned the south half of the northeast quarter of Section 17 said the center line of the gravel drive to the west is on the east-west quarter line of Section 17. Mr. Felix Quast, 63 years old, had lived in the Southeast Quarter of Section 17 all his life, also said the center line of the drive is on the quarter line.

May 9, 1972. McCombs Knutson Associates (Dickman Knutson, county surveyor) dug for the corner at the center line of the north-south road in line with the center line of the gravel drive. They dug a hole 8 feet by 10 feet by 5 feet deep but found no evidence of the corner.

October 31, 1972. Knutson set a McLeod County cast iron monument in the center line of the north-south road in line with the center line of the gravel drive to the west and took available reference ties.

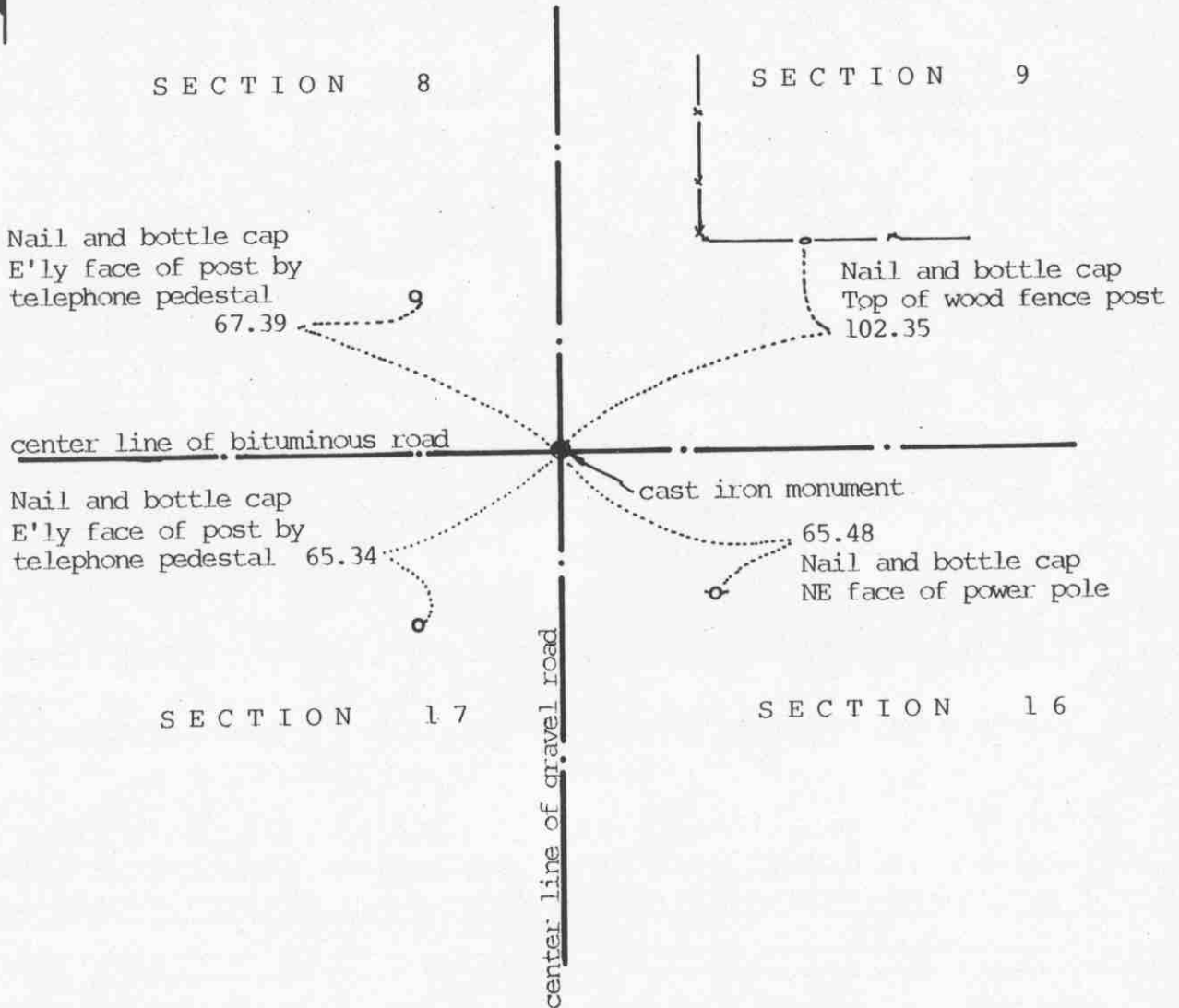
March 6, 1992. We found the monument in good condition and checked the reference ties.

There being no evidence to the contrary, we accept the monument set by Knutson as marking the quarter corner.

NORTHEAST corner, Section 17, Township 117 North, Range 27 West

Certificate of Location of Government Corner

SKETCH OF REFERENCE TIES (NO SCALE)



Statement of evidence relative to this corner location on sheet 2

I hereby certify that this document was prepared by me or under my direct supervision.

Willard Pellinen

Willard Pellinen
McLeod County Surveyor
License No. 9626

Date Oct. 18, 1992

OFFICE OF THE COUNTY RECORDER MCLEOD COUNTY, MINNESOTA.

I hereby certify that this document was filed in this office at 9 o'clock A.M. on the 26th day of Oct, 1992.

Carmen Otis Mulder, County Recorder

By _____, Deputy

Document No. 248493

NORTHEAST | corner, Section 17, Township 117 North, Range 27 West

Certificate of Location of Government Corner

1856. E. N. Darling of the General Land Office established this corner. He set a post, in a wet marsh, and marked 2 ash trees and 2 elms for bearing trees.

June 23, 1971. McCombs Knutson Associates (Dickman Knutson, county surveyor) dug for the corner, John Tupa from Hutchinson with a backhoe. Down $3\frac{1}{2}$ feet below the road surface they found a stone with a chiseled mark on top and a wood stake by the stone. They took available reference ties.

October 1, 1971. Knutson set a McLeod County cast iron monument at the corner. This corner falls on the center line intersection of the roads.

April 22, 1985. We found no ties remaining. We found the monument down 4 inches in good condition and took new reference ties.

April 16, 1992. We found the monument in good condition and checked the reference ties.

The monument set by Knutson is accepted as marking the correct location of the section corner. It fits occupation lines, the center line intersection of the roads, and it perpetuates the location of an older monument, the stone.

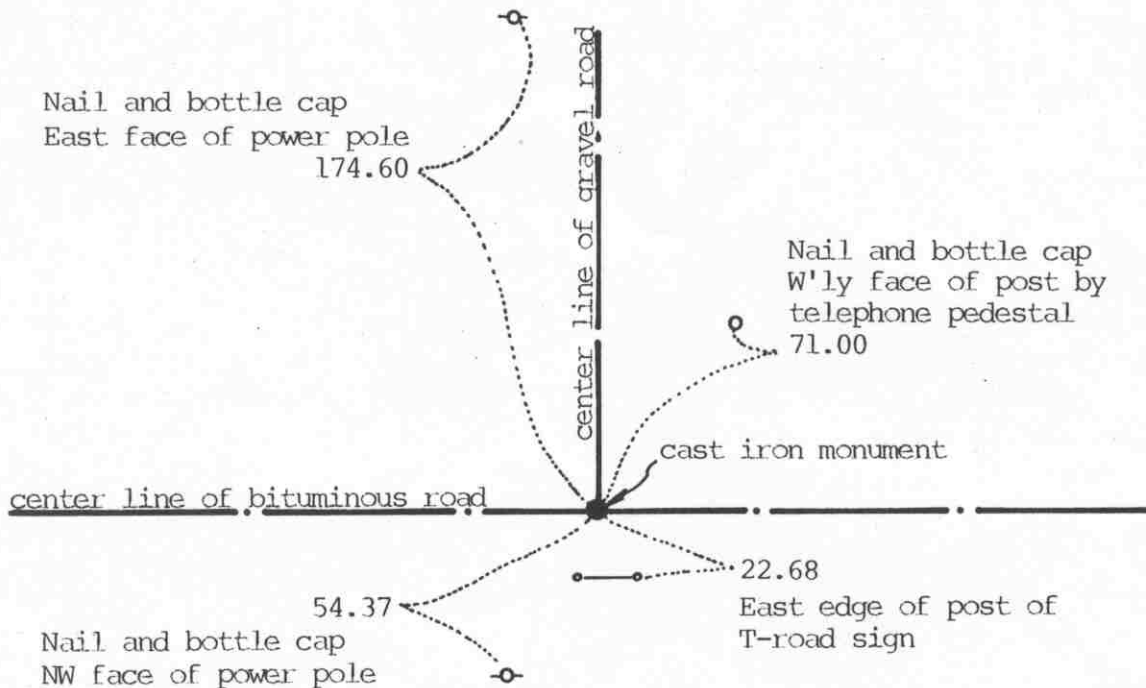
NORTH QUARTER corner, Section 17, Township 117 North, Range 27 West

Certificate of Location of Government Corner

SKETCH OF REFERENCE TIES

(NO SCALE)

SECTION 8



SECTION 17

Statement of evidence relative to this corner location on sheet 2

I hereby certify that this document was prepared by me or under my direct supervision.

Willard Pellinen

Willard Pellinen
McLeod County Surveyor
License No. 9626

Date Oct. 18, 1992

OFFICE OF THE COUNTY RECORDER
MCLEOD COUNTY, MINNESOTA.

I hereby certify that this document was filed in this office at 9 o'clock A.M. on the 26th day of Oct, 1992.

Carmen Helie Mulder, County Recorder

By _____, Deputy

Document No. 248494

NORTH QUARTER corner, Section 17, Township 117 North, Range 27 West

Certificate of Location of Government Corner

1856. E.N.Darling of the General Land Office set a post in a west marsh and marked a 12 inch and a 14 inch aspen for bearing trees.

June 23, 1971. McCombs Knutson Associates (Dickman Knutson, county surveyor) dug for the corner, John Tupa from Hutchinson with a backhoe. Down 3 feet below the surface of the bituminous road they found a stone, point up and wood stake beside the stone. Knutson tied off the stone and left the stone in place.

October 1, 1971. Knutson set a McLeod County cast iron monument and took additional reference ties.

April 22, 1985. We found no ties remaining to the corner. We found the monument in good condition 4 inches below the bituminous surface and took ne ties.

April 16, 1992. We found the monument in good condition and checked the reference ties.

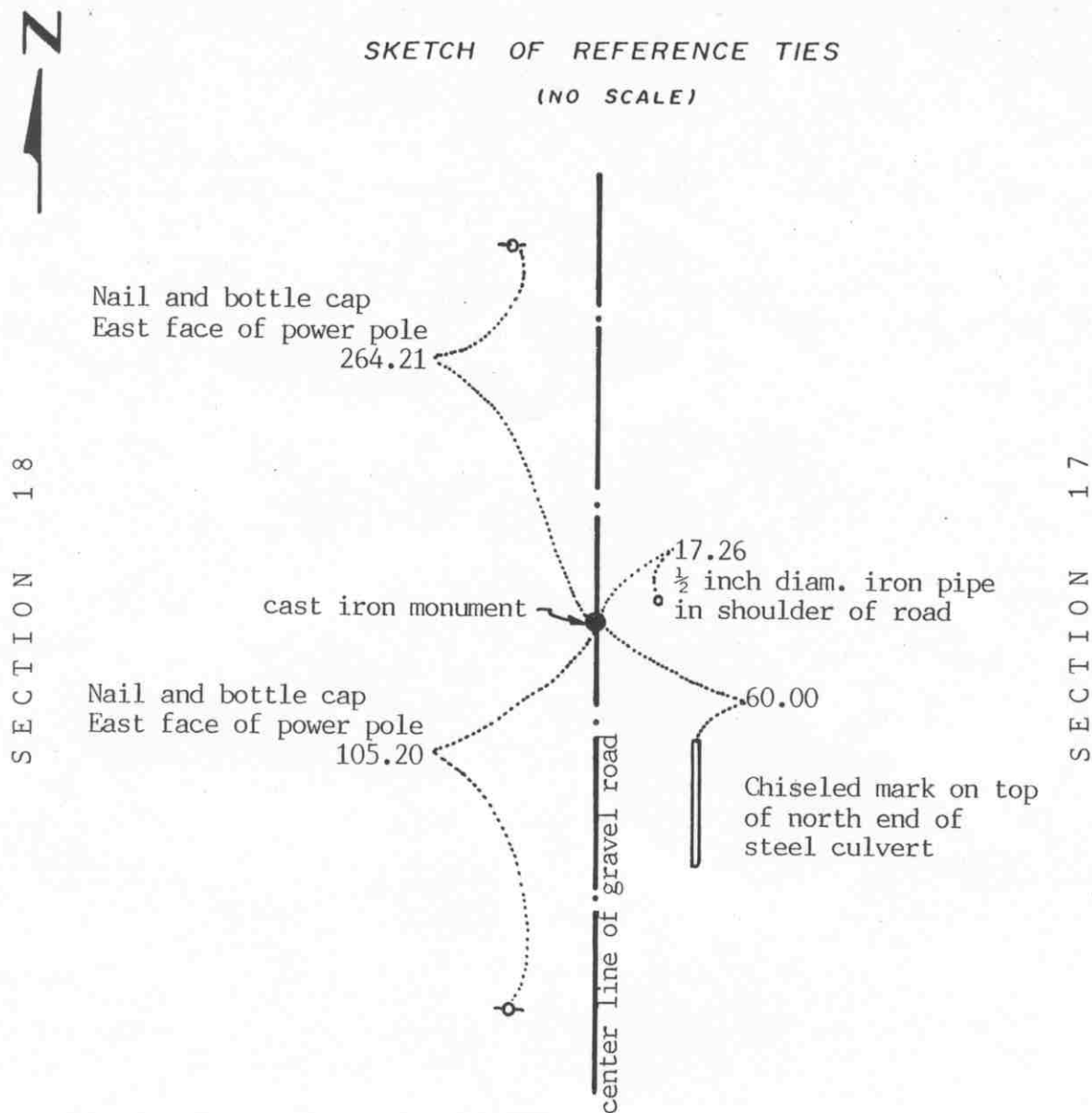
The monument set by Knutson is accepted as marking the quarter corner. It fits occupation lines, the center line intersection of the roads and it perpetuates the location of an older monument, the stone.

EAST QUARTER corner, Section 18, Township 117 North, Range 27 West

Certificate of Location of Government Corner

SKETCH OF REFERENCE TIES

(NO SCALE)



Statement of evidence relative to this corner location on sheet 2

I hereby certify that this document was prepared by me or under my direct supervision.

Willard Pellinen

Willard Pellinen

Land Surveyor

Minnesota Registration No. 9626

Date Oct. 11, 1992

OFFICE OF THE COUNTY RECORDER
COUNTY, MINNESOTA.

I hereby certify that this document was filed in this office at 9 o'clock A.M. on the 17th day of Oct, 1992.

Armen Belie Muder County Recorder

By _____, Deputy

Document No. 248334

EAST QUARTER corner, Section 18, Township 117 North, Range 27 West

Certificate of Location of Government Corner

1856. This corner was established by E.N.Darling of the General Land Office. He set a post and marked 2 10 inch elms for bearing trees.

1899. Field notes by E.L.Higgins, county surveyor, show a stake at the corner.

January 14, 1972. Mr. Alois Quast, 61 years old, had lived in the Northwest Quarter of Section 17 for 31 years, says center line of road in line with a fence to the west is the quarter corner. Mr. Joseph Schagel, in the Southeast Quarter of Section 18, agrees.

May 9, 1972. McCombs Knutson Associates (Dickman Knutson, county surveyor) dug a hole 12 feet by 16 feet by $4\frac{1}{2}$ feet deep at the center line of the north-south road in line with a fence to the west. The fence was $500\pm$ feet west, west of a ditch. They found no evidence of the quarter corner.

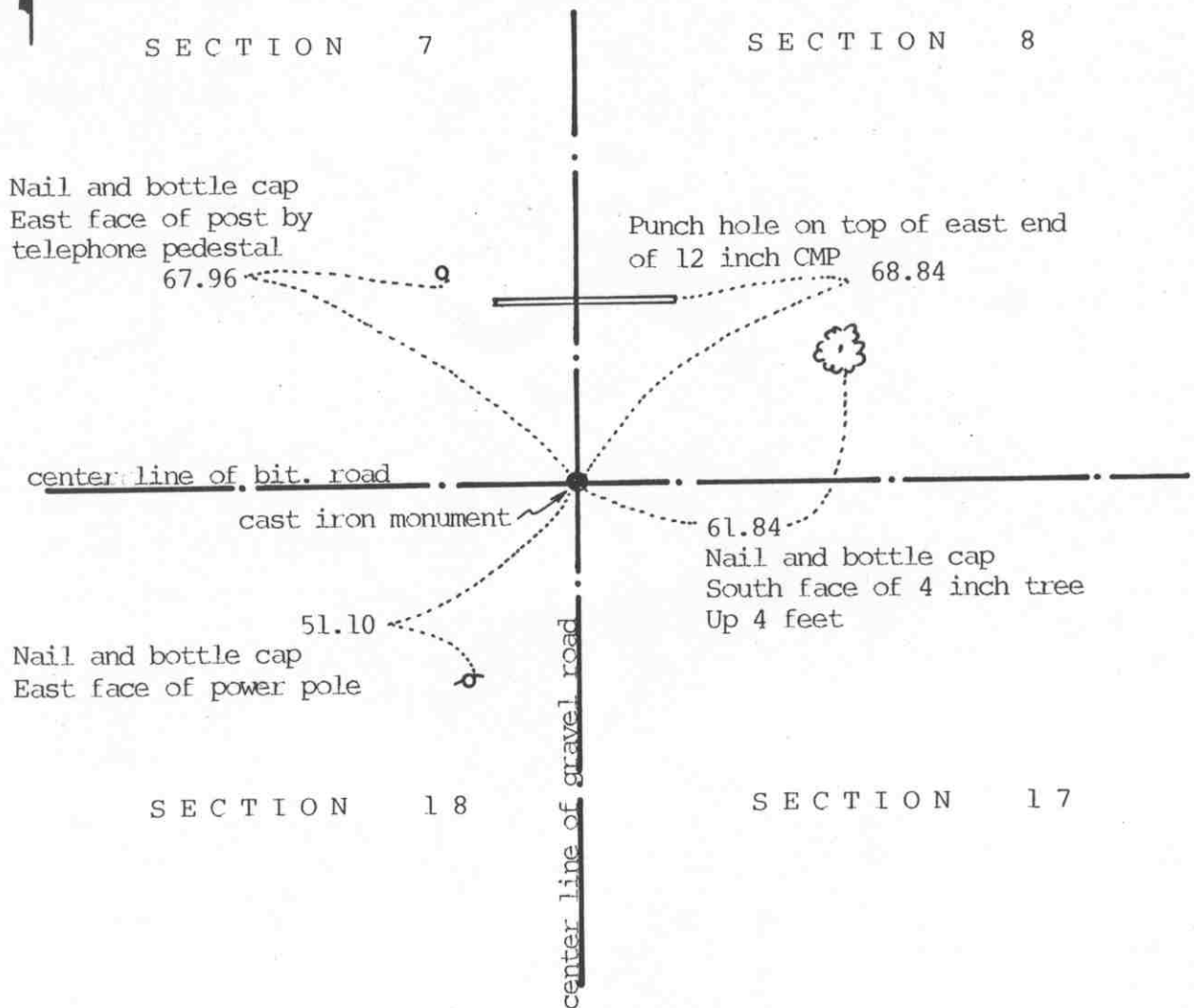
October 31, 1972. Knutson set a McLeod County cast iron monument at the center line of the road in line with the fence to the west.

March 6, 1992. We found the monument in good condition down 8 inches below the surface of the road. All the old ties were gone so we retied the monument.

There being no evidence to the contrary, we accept the monument set by Knutson as marking the quarter corner.

NORTHEAST corner, Section 18, Township 117 North, Range 27 West

Certificate of Location of Government Corner

SKETCH OF REFERENCE TIES
(NO SCALE)

Statement of evidence relative to this corner location on sheet 2

I hereby certify that this document
was prepared by me or under my
direct supervision.

Willard Pellinen

Willard Pellinen
McLeod County Surveyor
License No. 9626

Date October 19, 1992

OFFICE OF THE COUNTY RECORDER
MCLEOD COUNTY, MINNESOTA.

I hereby certify that this document was filed in this
office at 9 o'clock A.M. on the 26th day
of Oct, 1992.

Carmin Billie Mulder, County Recorder

By _____, Deputy

Document No. 248495

NORTHEAST

corner, Section 18, Township 117 North, Range 27 West

Certificate of Location of Government Corner

1856. This corner was originally set by E. N. Darling of the General Land Office. He set a post in a wet marsh and marked 2 aspens, an ash and an elm for bearing trees.

June 23, 1971. McCombs Knutson Associates (Dickman Knutson, county surveyor) dug for the corner, John Tupa from Hutchinson with a backhoe. Down $2\frac{1}{2}$ feet they found a 2 inch by 2 inch by 12 inch hub. They took reference ties and down 4 feet they found a rotted wood hub, same location. Down 5 feet below the surface of the road they found a stone, the center of the stone at the same location as the hubs.

October 31, 1971. Knutson set a McLeod County cast iron monument at the corner and took additional reference ties.

April 22, 1985. No reference ties remained. We found the monument in good condition down 4 inches and took new ties.

April 16, 1992. We found the monument in good condition and checked the reference ties.

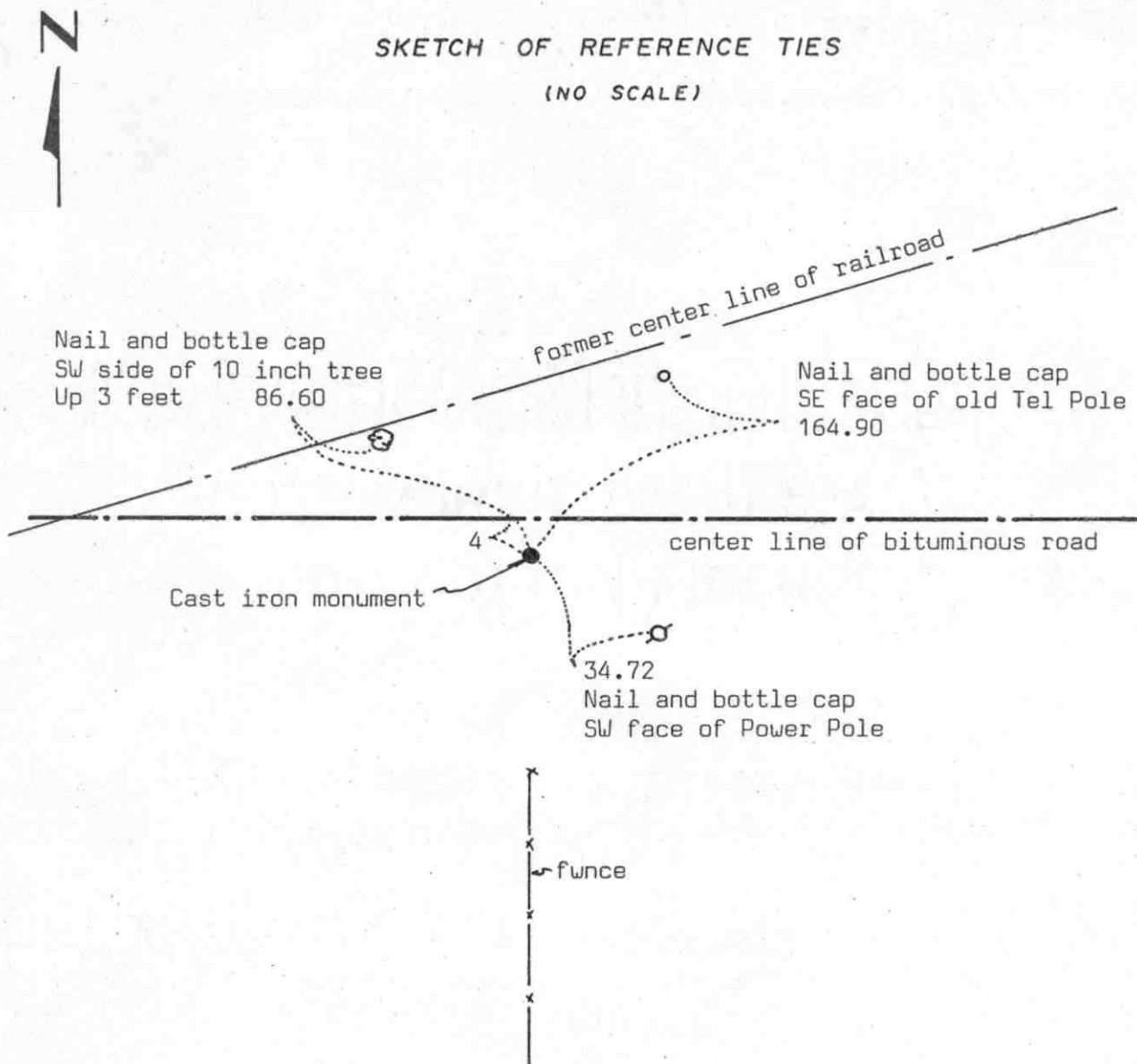
The monument set by Knutson is accepted as the corner location because it fits long standing occupation lines, the center lines of the roads and it perpetuates the position of older monuments, the hubs and the stone.

NORTH QUARTER corner, Section 18, Township 117 North, Range 27 West

Certificate of Location of Government Corner

SKETCH OF REFERENCE TIES

(NO SCALE)



Statement of evidence relative to this corner location on sheet 2

I hereby certify that this document was prepared by me or under my direct supervision.

Willard Pellinen

Willard Pellinen
McLeod County Surveyor
License No. 9626

Date 3/31/89

OFFICE OF THE COUNTY RECORDER
MCLEOD COUNTY, MINNESOTA.

I hereby certify that this document was filed in this office at 3 o'clock P.M. on the 6th day of April, 19 89.

Carmen Ostlie, County Recorder
By _____, Deputy

Document No. 227613

NORTH QUARTER corner, Section 18, Township 117 North, Range 27 West

Certificate of Location of Government Corner

This corner was originally set in 1856 by E.N.Darling of the Government Land Office. He set a post and had reference ties to 2 bearing trees.

In December, 1937, a Mr. Stifter told the highway department that there is a rock at the corner. The Highway Department didn't dig because the ground was frozen too hard.

The Chicago Northwestern Railroad right of way plans show this corner to be 96 feet south of the center line of the railroad and 291 feet east of the center line.

On December 13, 1971, we chained the north line of Section 18 and set a temporary north quarter corner on the center line of the road and in line with a fence running south.

In June, 1972, we dug for the corner and found a 3 inch by 5 inch by 6 inch stone below a wood stake. This was about 4 feet south of the center line of the road and in line with the fence running south.

On July 3, 1974, we set a McLeod County cast iron monument over the stone and took reference ties.

On January 5, 1989, we found the cast iron monument in good condition, but only one reference tie remaining. We took additional ties.

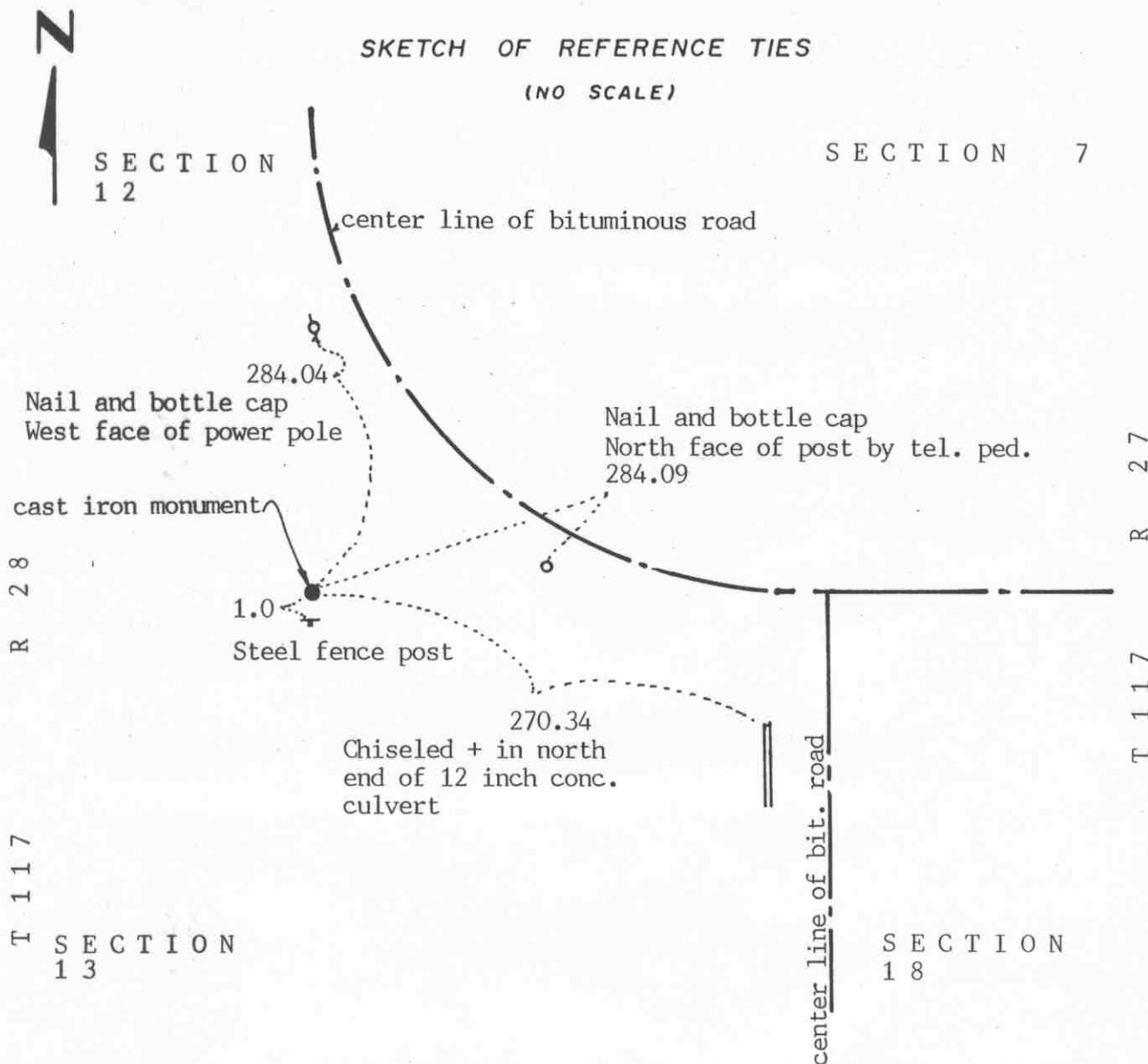
We feel the found stone has perpetuated the correct quarter corner.

NORTHEAST corner, Section 13, Township 117 North, Range 28 West

Certificate of Location of Government Corner

SKETCH OF REFERENCE TIES

(NO SCALE)



Statement of evidence relative to this corner location on sheet 2

I hereby certify that this document was prepared by me or under my direct supervision.

Willard Pellinen

Willard Pellinen
McLeod County Surveyor
License No. 9626

Date July 16, 1992

OFFICE OF THE COUNTY RECORDER
MCLEOD COUNTY, MINNESOTA.

I hereby certify that this document was filed in this office at 9 o'clock A.M. on the 20th day of July, 1992.

Carmen Ostlie, County Recorder

By _____, Deputy

Document No. 246518

NORTHEAST corner, Section 13, Township 117 North, Range 28 West***Certificate of Location of Government Corner***

1855. John Ryan of the General Land Office set a post in a marsh and marked 3 elms and an oak for bearing trees.

December, 1937. County Highway Department field notes show an iron at the corner.

March 13, 1969. McCombs Knutson Associates (Dickman Knutson, county surveyor) found an angle iron, top down 1 foot below the ground surface, at the center line P. I. of County Highway No. 5 and in line with a fence to the west.

Knutson replaced the angle iron with a McLeod County cast iron monument and took reference ties.

August 22, 1991. We found the monument in good condition, top flush with the ground, and took new reference ties.

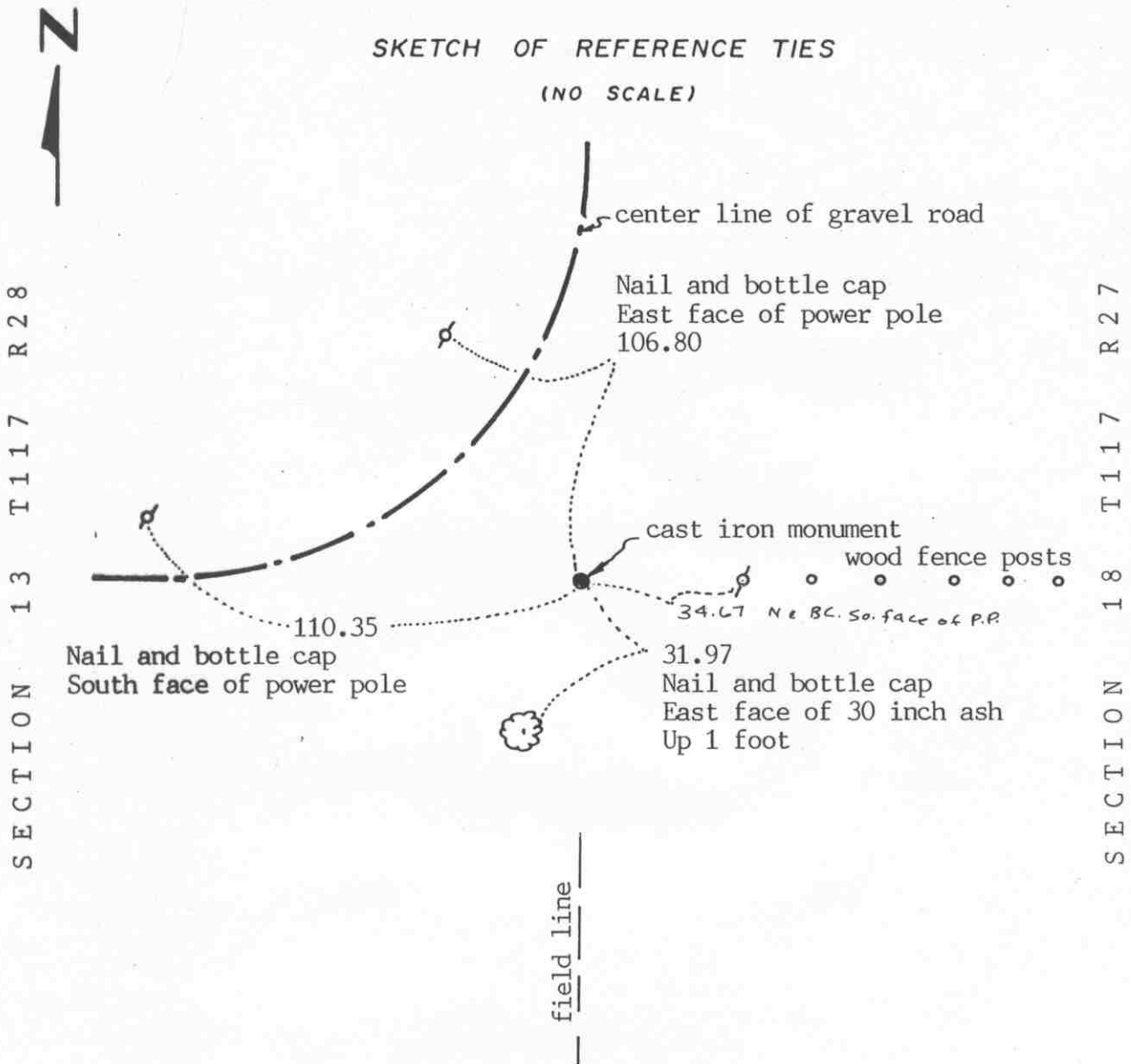
The monument set by Knutson is accepted as marking the correct location of the section corner. It fits occupation lines, the highway center line and the fence and it replaces an older monument which has perpetuated the location of the corner.

EAST QUARTER corner, Section 13, Township 117 North, Range 28 West

Certificate of Location of Government Corner

SKETCH OF REFERENCE TIES

(NO SCALE)



Statement of evidence relative to this corner location on sheet 2

I hereby certify that this document was prepared by me or under my direct supervision.

Willard Pellinen

Willard Pellinen
McLeod County Surveyor
License No. 9626

Date July 16, 1992

OFFICE OF THE COUNTY RECORDER
MCLEOD COUNTY, MINNESOTA.

I hereby certify that this document was filed in this office at 9 o'clock A.M. on the 20th day of July, 1992.

Armen Ostlie, County Recorder

By _____, Deputy

Document No. 246519

EAST QUARTER corner, Section 13, Township 117 North, Range 28 West***Certificate of Location of Government Corner***

1855. John Ryan of the General Land Office established this corner. He set a post and marked an oak and an elm for bearing trees.

December 1968. McCombs Knutson Associates (Dickman Knutson, county surveyor) measured the east line of Section 13 and found an iron pin on the center line P.I. of the road. Roads north and west. This iron pin was in line with a fence to the east and a fence to the south.

1969. Knutson replaced the iron pin with a McLeod County cast iron monument and took reference ties.

August 22, 1991. We found the monument in good condition but all the reference ties had been destroyed. We took new reference ties.

The monument set by Knutson is accepted as marking the correct location of the quarter corner. It replaces an older monument and hits the occupation lines, the fences and road center line.